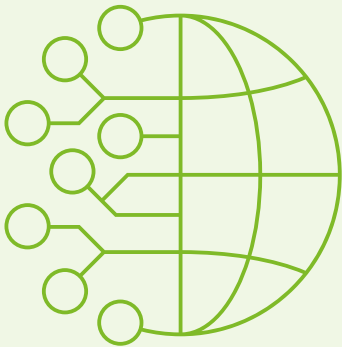


Why

should countries establish or expand systems for One Health integrated surveillance of AMR and AMU

Although not all resistant bacteria and resistance traits cross human, animal, plant and environmental sectors, their interconnectedness necessitates an integrated One Health approach for the surveillance of AMR and AMU. This is essential for a sustained, holistic and coordinated global response to AMR, as surveillance generates data and information for meaningful actions.



Countries can establish and expand systems for One Health integrated surveillance of AMR and AMU for one or more of the following reasons.

- 1** Provide information on patterns, trends and potential associations
- 2** Support and inform risk analysis for AMR
- 3** Alert authorities about emerging and re-emerging AMR and changes in patterns of AMU
- 4** Inform the development of and assess the effectiveness of interventions to address AMR and improve public health and sector-specific outcomes.

For more information, please visit our websites:

FAO: www.fao.org
UNEP: www.unep.org
WHO: www.who.int
WOAH: www.woah.org