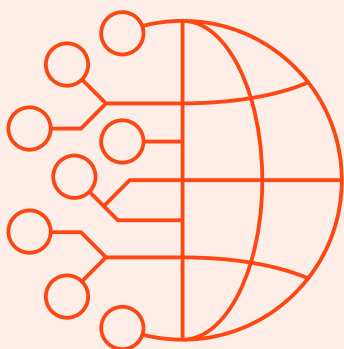


What

is One Health integrated surveillance of antimicrobial resistance (AMR) and use (AMU)?

Antimicrobial resistance (AMR) is a global health threat caused by the overuse and misuse of antimicrobials across humans, animals, plants, and the environment, which fosters the development and spread of resistance. Preventing and controlling AMR is vital to maintain the efficacy of existing antimicrobials and protect human and animal health, food and water security, and the environment. A One Health approach, which integrates AMR and antimicrobial use (AMU) surveillance across sectors, is essential for an effective response.



For more information, please visit our websites:

FAO: www.fao.org
UNEP: www.unep.org
WHO: www.who.int
WOAH: www.woah.org

Integrated surveillance of AMR and AMU consists of continuous, collaborative, coordinated, systematic collection, collation, validation, analysis, interpretation, communication and sharing of data on AMU and AMR. The data include data from humans, animals and products, plants/crops and products and the environment, which are used to provide information for sectors and actions to reduce the burden of AMR-associated infections and preserve the efficacy of antimicrobial agents in all One Health sectors.

Integrated surveillance requires sharing of data, laboratory and epidemiological resources and expertise to maximize synergies and reduce the cost of surveillance. Strong collaboration should therefore be established among competent national authorities in relevant sectors. Stakeholders in the private sector should be engaged if necessary, through public-private partnerships, if this could result in data and resource sharing, e.g., access to AMR data from commercial diagnostic laboratories.