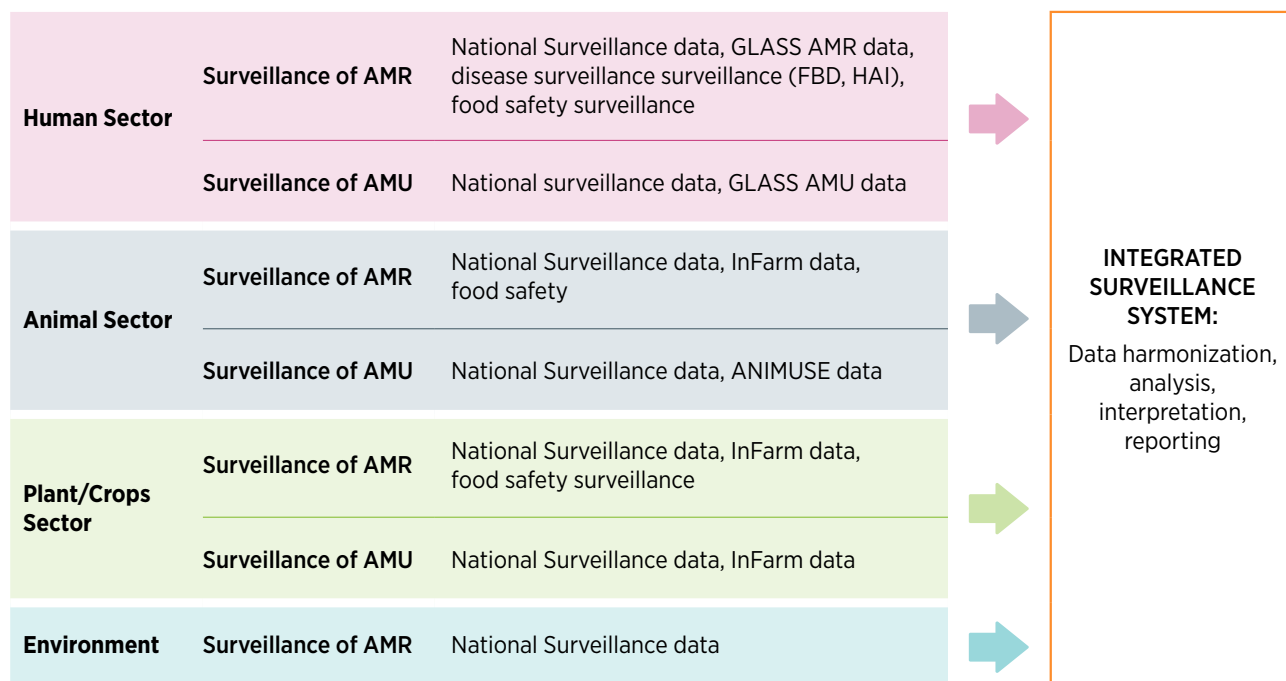


How

can countries establish or expand systems for One Health integrated surveillance of AMR and AMU

Several international recommendations have already emphasized the importance of integrated surveillance for AMR and AMU, and some countries and regions have already established harmonization within and across sectors at strategic and operational levels. Countries can start establishing or expanding integrated surveillance for AMR and AMU by utilizing either approach A or B, depending on available resources, national priorities, and local context.

Approach A: Use of existing surveillance systems

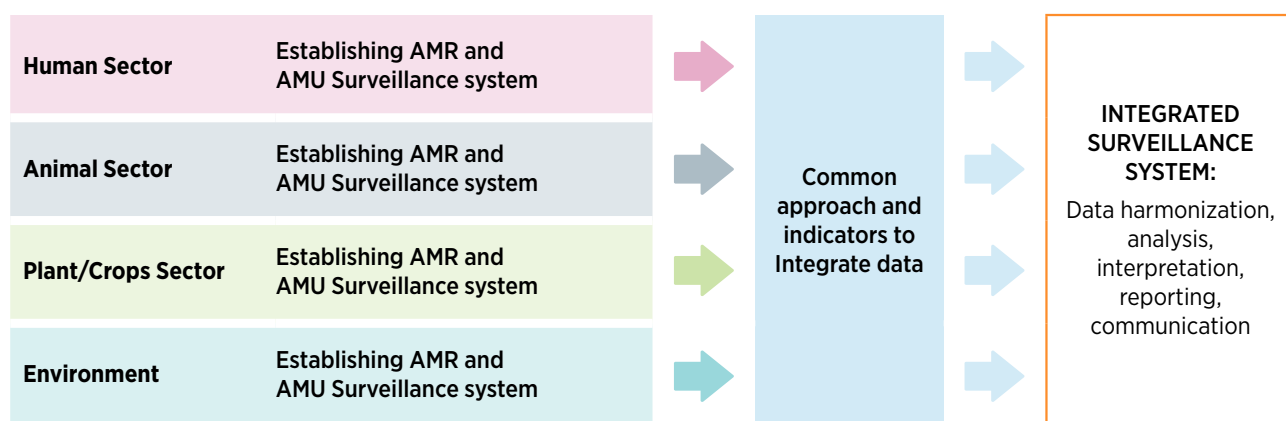


How

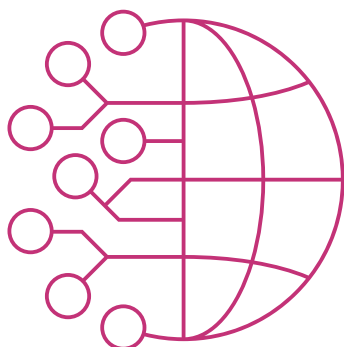
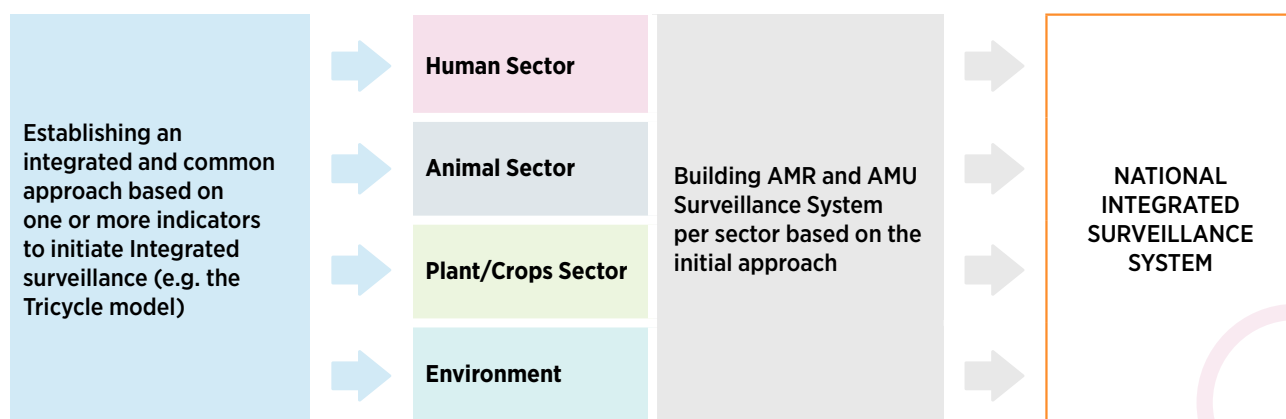
can countries establish or expand systems for One Health integrated surveillance of AMR and AMU

Approach B: building a new integrated surveillance system

Model 1



Model 2



For more information, please visit our websites:

FAO: www.fao.org
UNEP: www.unep.org
WHO: www.who.int
WOAH: www.woah.org